

**Superior North
Emergency Medical Services
Organizational Charts**

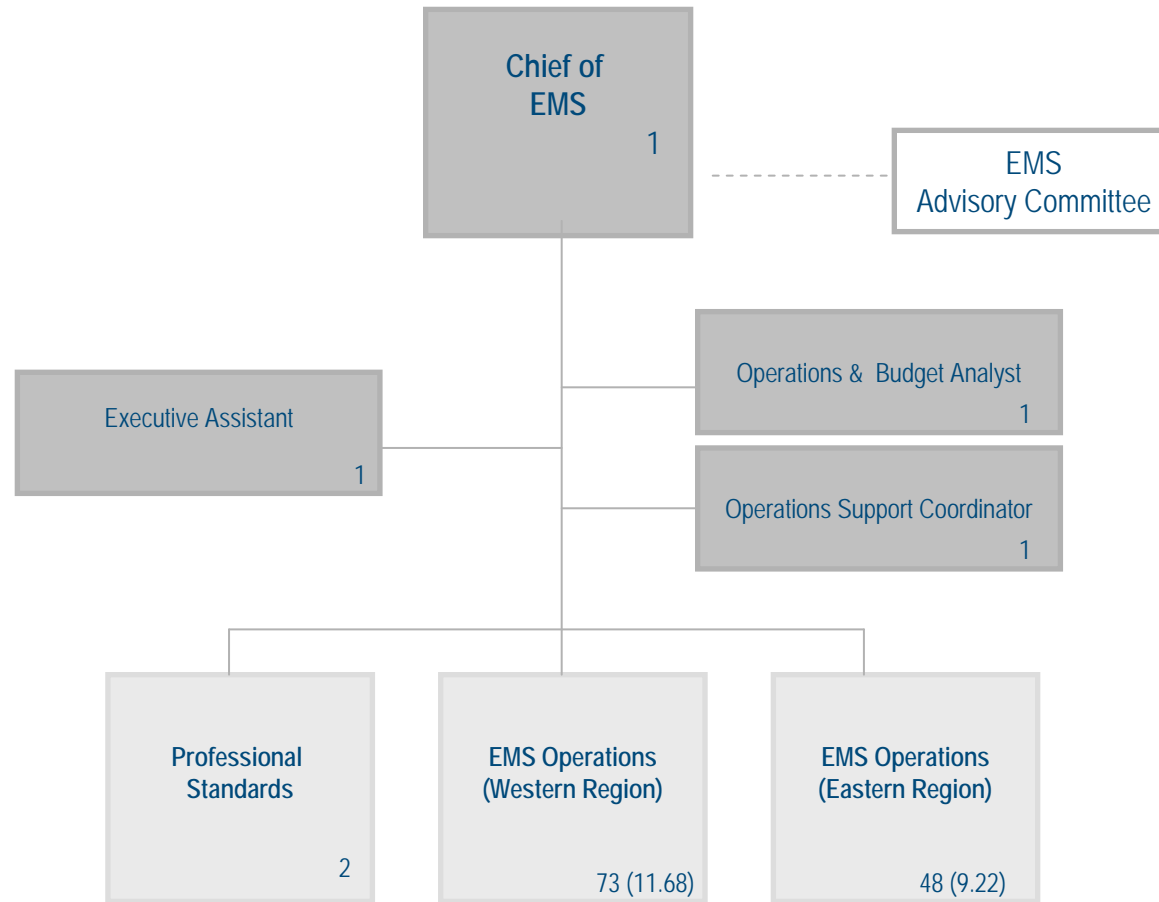
Effective: June 1, 2010



Superior North Emergency Medical Services (EMS) Overview

Superior North Emergency Medical Services (EMS) provides comprehensive and cost effective ambulance / emergency care to the citizens of the District of Thunder Bay. Its objectives are to provide quality patient care within the five fundamental principles of accessibility, integration, seamlessness, accountability, and responsiveness. To this end, it will work to maintain/exceed legislative response times, expand training opportunities for paramedics, and continue to provide effective and efficient professional emergency care to our citizens.

Superior North EMS Overview



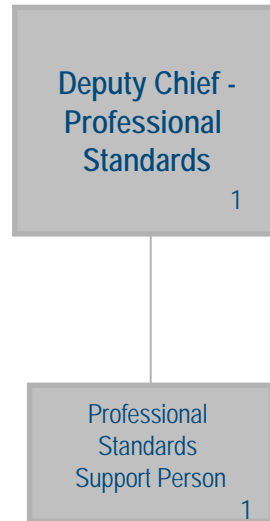
TOTAL F/T 127
 TOTAL FTE (20.90)
 GRAND TOTAL 147.90



F/T: # of employees who work standard number of hours on a continuing basis in approved job classes
 (FTE): equivalent number of full-time positions based on the total annual **hours** worked by temporary and/or part-time employees

Superior North EMS

Professional Standards



TOTAL F/T 2
TOTAL FTE (0.00)
GRAND TOTAL 2.00

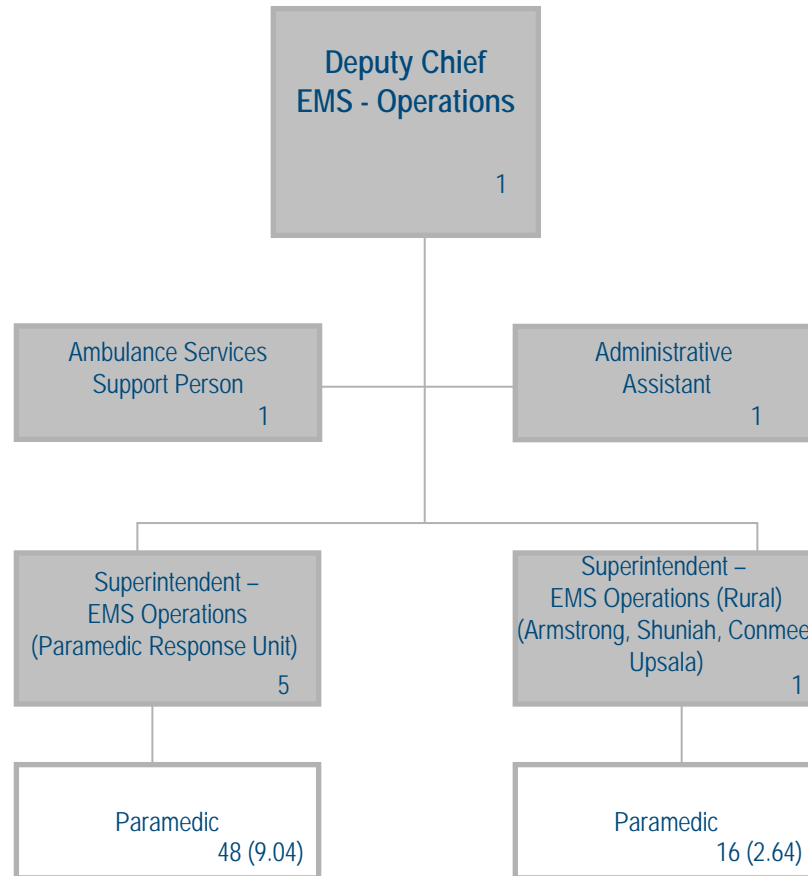
Non-Unionized Job Classes



F/T: # of employees who work standard number of hours on a continuing basis in approved job classes
(FTE): equivalent number of full-time positions based on the total annual **hours** worked by temporary and/or part-time employees

Superior North EMS

EMS Operations (Western Region)



TOTAL F/T 73
 TOTAL FTE (11.68)
 GRAND TOTAL 84.68

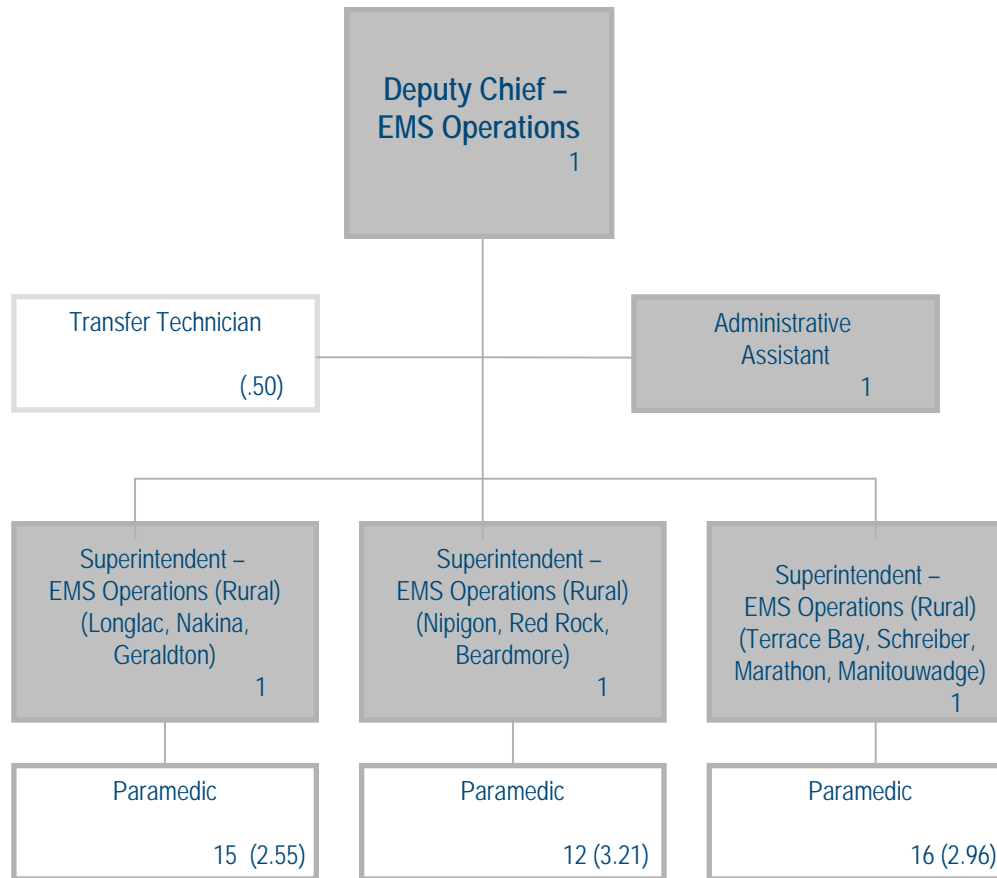
Non-Unionized Job Classes



F/T: # of employees who work standard number of hours on a continuing basis in approved job classes
 (FTE): equivalent number of full-time positions based on the total annual hours worked by temporary and/or part-time employees

Superior North EMS

EMS Operations (Eastern Region)



TOTAL F/T 48
 TOTAL FTE (8.72)
 GRAND TOTAL 56.72

Non-Unionized Job Classes



F/T: # of employees who work standard number of hours on a continuing basis in approved job classes
 (FTE): equivalent number of full-time positions based on the total annual hours worked by temporary and/or part-time employees