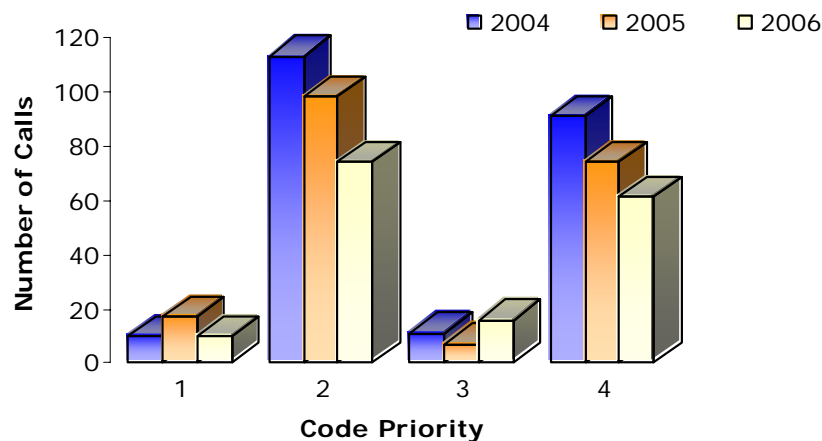


REQUEST FOR SERVICE:

This section reports on the primary function of Emergency Medical Services which is to provide ambulance transportation for sick and injured residents. The first table indicates the number of calls "Year to Date" by priority.

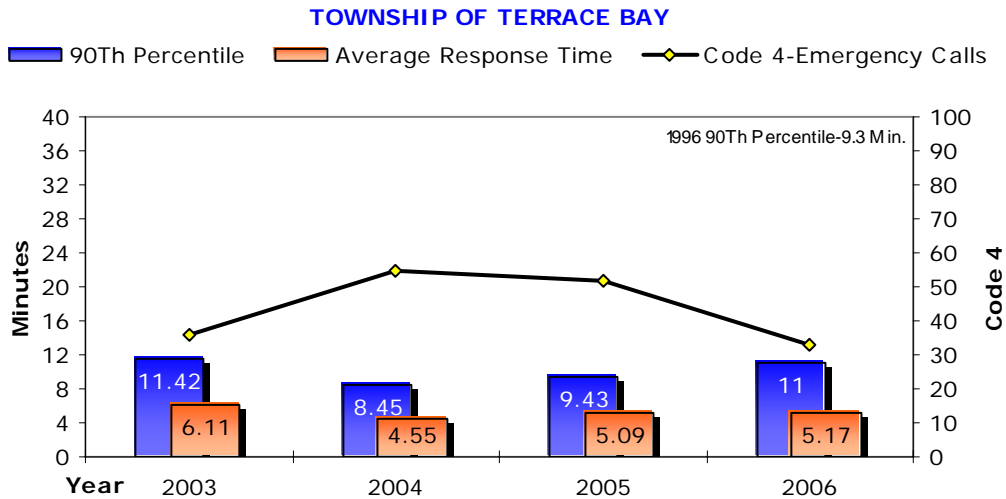
- CODE 1** A call that can be deferred without impact to the patient, i.e. going home from the hospital for a visit.
- CODE 2** A call that must be done at a certain time due to an appointment, i.e. bringing a patient to the hospital for diagnostics tests at 09:00.
- CODE 3** A call that is urgent because the patient needs medical attention but life or limb is not at risk, i.e. a simple broken leg.
- CODE 4** A call for life and death emergency or unknown situation.
- CODE 8** A call where the ambulance is asked to stand by at a specific location, i.e. a fire call.

CODE	Jan	Feb	Mar	Apr	May	Jun	July	Aug	Sep	Oct	Nov	Dec	YTD
1	0	0	0	0	1	1	3	1	0	2	0	2	10
2	4	3	11	6	6	12	10	6	3	6	5	2	74
3	1	1	0	1	1	3	4	1	1	2	0	1	16
4	9	4	2	5	6	3	5	6	5	3	6	7	61
8	0	1	0	0	2	2	0	8	1	1	2	1	18
Total	14	9	13	12	16	21	22	22	10	14	13	13	179



90TH PERCENTILE AND AVERAGE RESPONSE TIMES:

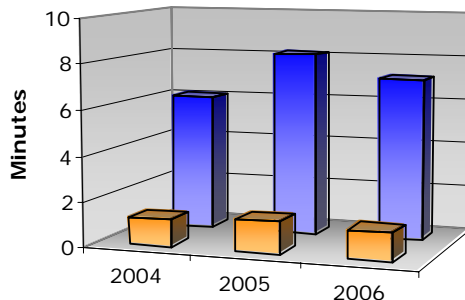
The Ministry of Health and Long Term Care has legislated that response times must be equal to or better than prior to 1997 when the Local Services Realignment initiative was announced. Although MOH-LTC requires only an across the district measurement, we monitor response times in each geographic community. 90th percentile means that 90 percent of the Code 4 calls were responded to in less than the posted time.



SERVICE LEVEL: Basic Life Support
1996 DISTRICT 90TH PERCENTILE: 12:41 minutes

90TH PERCENTILE REACTION TIMES FROM NOTIFICATION TO DEPARTURE FROM STATION:

Superior North EMS monitors how quickly staff responds to emergencies while on duty and, if applicable, while on-call away from the station. Target time for on-site is 90 seconds and for on-call it is 8 minutes.



	2004	2005	2006
On Site	1.2	1.42	1.23
On Call	6.07	8.14	7.13



2006 REPORT FOR TERRACE BAY

SUPERIOR NORTH EMERGENCY MEDICAL SERVICES

STAFFING REPORT:

Approved staffing complement: 3 full-time 4 part-time

STAFFING PATTERN:

On site hours: 10
 Off-site hours: 14

DOWNSTAFFING:

	Jan	Feb	Mar	Apr	May	Jun	Jul	Aug	Sep	Oct	Nov	Dec
(hours)												
Downstaffing Total	0	0	0	58	0	0	0	0	0	0	0	0
Fully Downstaffed	0	0	0	0	0	0	0	0	0	0	0	0
Total - First Response	0	0	0	58	0	0	0	0	0	0	0	0

FLEET REPORT:

Total kilometers traveled: 33,928

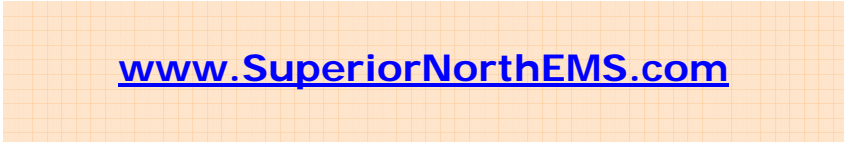
FACILITY REPORT:

January – June

Nothing to report.

July – December

Nothing to report.



TRAINING:

January - June

Type: 35A Stretcher – Proper Lifting
 Date: March
 No. attended: 2
 Length: 4 hrs.
 Location: Terrace Bay

Type: Ambulance Call Report
 Manual Review
 Date: March
 No. attended: 2
 Length: 1.5 hrs.
 Location: Terrace Bay

Type: Backboard/Stiffneck Select
 Date: March
 No. attended: 1
 Length: 1 hr.
 Location: Terrace Bay

Type: KED Review
 Date: April
 No. attended: 1
 Length: 1 hr.
 Location: Terrace Bay

Type: Sager Traction Splint
 Date: April
 No. attended: 1
 Length: 1 hr.
 Location: Terrace Bay



Type: Scoop Stretcher
 Date: April
 No. attended: 1
 Length: 1 hr.
 Location: Terrace Bay

Type: X-Backboard
 Date: April
 No. attended: 2
 Length: 2 hrs.
 Location: Terrace Bay

Type: Mandatory Training
 Date: May
 No. attended: 2
 Length: 8 hrs.
 Location: Manitouwadge

Type: Mandatory Training
 Date: May
 No. attended: 2
 Length: 8 hrs.
 Location: Marathon

July – December

Type: Helicopter Utilization
 Date: July
 No. attended: 1
 Length: 1.5 hrs.
 Location: Terrace Bay

Type: Palliative Care Charts
 Date: July
 No. attended: 1
 Length: 1 hrs.
 Location: Terrace Bay

Type: Tempadots
 Date: July
 No. attended: 1
 Length: .5 hrs.
 Location: Terrace Bay

Type: WHMIS
 Date: July
 No. attended: 1
 Length: 1.5 hrs.
 Location: Terrace Bay

Type: N95 Fit Testing
 Date: November
 No. attended: 4
 Length: .5 hrs.
 Location: Schreiber



Proudly Serving the People of the District of Thunder Bay

Find out more from our newsletter – located at www.SuperiorNorthEMS.com

INJURIES:

Lost time: 0
 Medical aid: 0



2006 REPORT FOR TERRACE BAY SUPERIOR NORTH EMERGENCY MEDICAL SERVICES

PUBLIC RELATIONS:

January – June

- * General inquiries – first aid, road safety, EMS operations, CPR standards
- * Base tours – February, March, June
- * Discussion with OPP re impaired driving presentation
- * Participated in Emergency Services Award function
- * Orientation session for Fire Dept. on EMS vehicle and equipment
- * Teddy bear picnic at hospital in May
- * EMS week BBQ and blood pressure clinic for general public in May
- * Standby participation in OPP torch run for special Olympics in May
- * Tour of vehicle in June

July – December

- * Station tours
 - * Halloween tour for children
 - * Standby at Remembrance Day ceremony
-

CONTRACTED SERVICES:

Nature of Event: Superior Classic Car Club Drag Races
No. of Hours: 35.5
Date: August

INVESTIGATIONS:

Substantiated: 0
Unsubstantiated: 0

OTHER INFORMATION:

January – June

The Terrace Bay Station held an open house and BBQ for EMS Week, May 15-21, 2006. A blood pressure clinic was offered and three items were raffled off, a mini Moose Medic, a first aid kit, and a smoke detector donated by the Fire Dept.

July – December

Nothing to report.