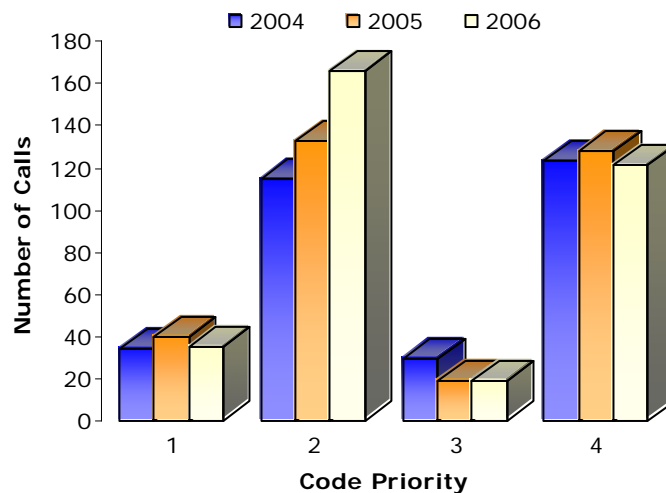


REQUEST FOR SERVICE:

This section reports on the primary function of Emergency Medical Services which is to provide ambulance transportation for sick and injured residents. The first table indicates the number of calls "Year to Date" by priority.

- CODE 1** A call that can be deferred without impact to the patient, i.e. going home from the hospital for a visit.
- CODE 2** A call that must be done at a certain time due to an appointment, i.e. bringing a patient to the hospital for diagnostics tests at 09:00.
- CODE 3** A call that is urgent because the patient needs medical attention but life or limb is not at risk, i.e. a simple broken leg.
- CODE 4** A call for life and death emergency or unknown situation.
- CODE 8** A call where the ambulance is asked to stand by at a specific location, i.e. a fire call.

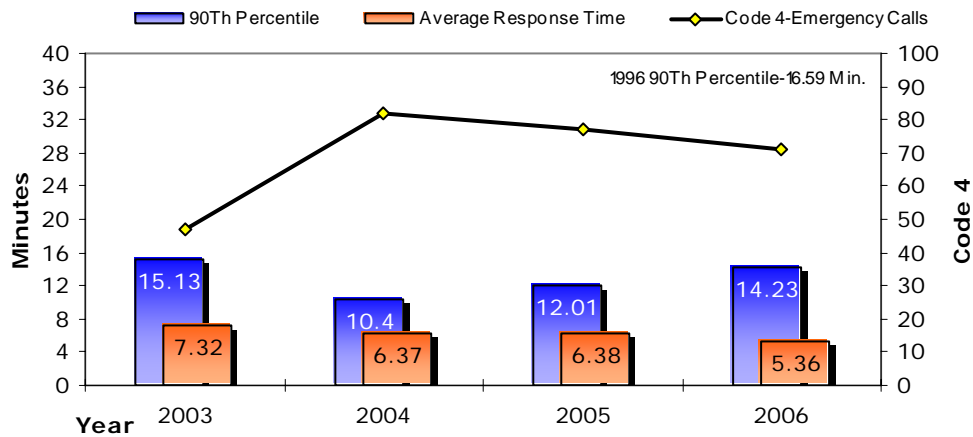
CODE	Jan	Feb	Mar	Apr	May	Jun	July	Aug	Sep	Oct	Nov	Dec	YTD
1	5	6	2	2	3	1	3	4	0	2	4	3	35
2	23	15	16	9	14	16	11	15	11	23	5	8	166
3	2	0	3	0	3	1	2	1	0	1	4	2	19
4	8	5	7	10	8	13	9	16	16	5	11	13	121
8	2	1	1	1	0	1	0	0	6	0	3	1	16
Total	40	27	29	22	28	32	25	36	33	31	27	27	357



90TH PERCENTILE AND AVERAGE RESPONSE TIMES:

The Ministry of Health and Long Term Care has legislated that response times must be equal to or better than prior to 1997 when the Local Services Realignment initiative was announced. Although MOH-LTC requires only an across the district measurement, we monitor response times in each geographic community. 90th percentile means that 90 percent of the Code 4 calls were responded to in less than the posted time.

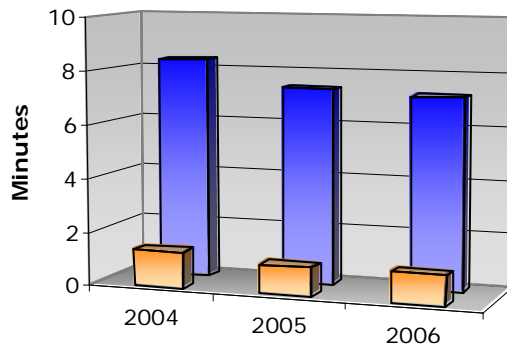
TOWNSHIP OF NIPIGON



SERVICE LEVEL: Basic Life Support
1996 DISTRICT 90TH PERCENTILE: 12:41 minutes

90TH PERCENTILE REACTION TIMES FROM NOTIFICATION TO DEPARTURE FROM STATION:

Superior North EMS monitors how quickly staff responds to emergencies while on duty and, if applicable, while on-call away from the station. Target time for on-site is 90 seconds and for on-call it is 8 minutes.



	2004	2005	2006
On Site	1.35	1.07	1.11
On Call	8.31	7.32	7.16



STAFFING REPORT:

Approved staffing complement: 4 full-time, 3 part-time

STAFFING PATTERN:

On site hours: 12

Off-site hours: 12

DOWNSTAFFING:

	Jan	Feb	Mar	Apr	May	Jun	Jul	Aug	Sep	Oct	Nov	Dec
(hours)												
Downstaffing Total	.33	0	0	24.65	.76	0	2.5	0	2.88	0	0	5.3
Fully Downstaffed	0	0	0	0	0	0	2.5	0	0	0	0	0
Total - First Response	.33	0	0	24.65	.76	0	0	0	2.88	0	0	5.3

FLEET REPORT:

Total kilometers traveled: 49,145

Two ambulances in Nipigon:

One 2005 Modular Ambulance Chev fleet/Max Type 3

One 2000 Ford diesel Demers Type 3

FACILITY REPORT:

January – June

Nothing to report.

July – December

In September a new furnace was installed and the garage doors were repaired.

TRAINING:

January – June

Type: Wilderness Response Unit
 Date: March
 No. attended: 1
 Length: 16 hrs.
 Location: Manitouwadge



Type: Backboard/stiffneck Select
 Date: April
 No. attended: 1
 Length: 2
 Location: Marathon

Type: MRx Defib
 Date: April
 No. attended: 1
 Length: 4 hrs.
 Location: Marathon

Type: Mandatory Training
 Date: May
 No. attended: 5
 Length: 8 hrs.
 Location: Nipigon

Type: Vanish Point Syringes
 Date: June
 No. attended: 1
 Length: .5 hr.
 Location: Marathon



Type: Palliative Care
 Date: June
 No. attended: 1
 Length: .5 hrs.
 Location: Marathon

Type: Tempa Dot
 Date: June
 No. attended: 1
 Length: .5 hrs.
 Location: Marathon

Type: WHMIS
Date: June
No. attended: 1
Length: 1 hrs.
Location: Marathon

July – December

Nothing to report.

INJURIES:

Lost time: 1
Medical aid: 3

PUBLIC RELATIONS:

January – June

- * Scenario testing
- * Infant choking presentation
- * Symptom Relief Entrance Exam preparation
- * Emergency services directory night
- * EMS week – blood pressure talk, display at grocery store
- * Car seat clinic with OPP
- * Annual sea cadet picnic

July – December

- * Volunteer standby for Hike for Health
 - * FASD walk along
 - * Parade and kid's challenge
 - * Volunteer standby for 5 km. walk/run
 - * Parade of lights participation
-

CONTRACTED SERVICES:

Nature of event: 0
Number of hours: 0

www.SuperiorNorthEMS.com

INVESTIGATIONS:

Substantiated: 0
Unsubstantiated: 0

OTHER INFORMATION:

January – June

Nothing to report.

July – December

Nothing to report.



**NIPIGON STAFF HARD AT WORK
AND TRAINING**

