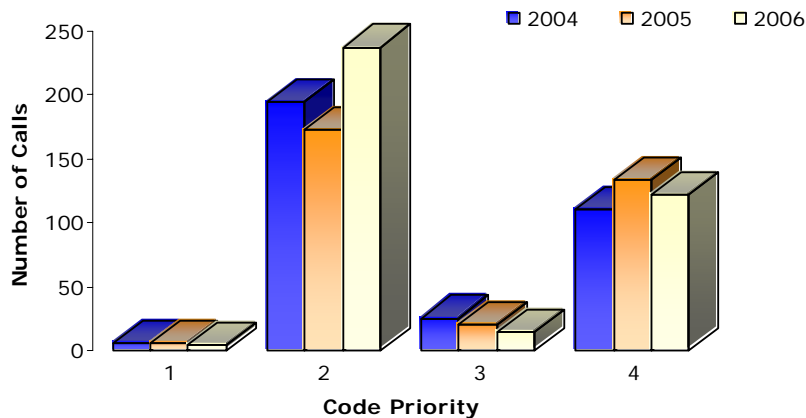


### REQUEST FOR SERVICE:

This section reports on the primary function of Emergency Medical Services which is to provide ambulance transportation for sick and injured residents. The first table indicates the number of calls "Year to Date" by priority.

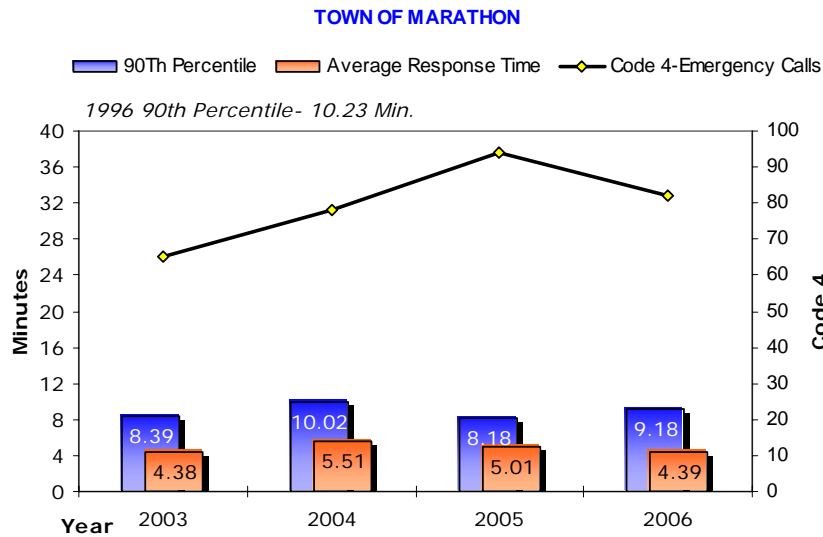
- CODE 1** A call that can be deferred without impact to the patient, i.e. going home from the hospital for a visit.
- CODE 2** A call that must be done at a certain time due to an appointment, i.e. bringing a patient to the hospital for diagnostics tests at 09:00.
- CODE 3** A call that is urgent because the patient needs medical attention but life or limb is not at risk, i.e. a simple broken leg.
- CODE 4** A call for life and death emergency or unknown situation.
- CODE 8** A call where the ambulance is asked to stand by at a specific location, i.e. a fire call.

CODE	Jan	Feb	Mar	Apr	May	Jun	July	Aug	Sep	Oct	Nov	Dec	YTD
<b>1</b>	0	0	1	0	1	0	0	0	0	1	2	0	<b>5</b>
<b>2</b>	16	10	18	22	15	23	21	20	8	21	28	35	<b>237</b>
<b>3</b>	1	2	3	0	0	0	1	1	3	1	3	0	<b>15</b>
<b>4</b>	8	6	5	12	9	7	12	13	19	12	10	9	<b>122</b>
<b>8</b>	0	0	0	3	2	3	2	10	3	1	2	2	<b>28</b>
<b>Total</b>	<b>25</b>	<b>18</b>	<b>27</b>	<b>37</b>	<b>27</b>	<b>33</b>	<b>36</b>	<b>44</b>	<b>33</b>	<b>36</b>	<b>45</b>	<b>46</b>	<b>407</b>



### 90<sup>TH</sup> PERCENTILE AND AVERAGE RESPONSE TIMES:

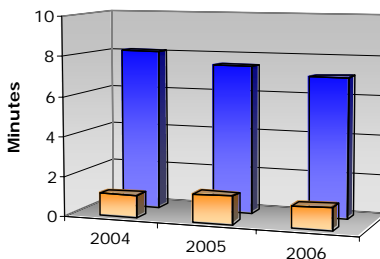
The Ministry of Health and Long Term Care has legislated that response times must be equal to or better than prior to 1997 when the Local Services Realignment initiative was announced. Although MOH-LTC requires only an across the district measurement, we monitor response times in each geographic community. 90<sup>th</sup> percentile means that 90 percent of the Code 4 calls were responded to in less than the posted time.



**SERVICE LEVEL:** Basic Life Support  
**1996 DISTRICT 90<sup>TH</sup> PERCENTILE:** 12:41 minutes

### 90<sup>TH</sup> PERCENTILE REACTION TIMES FROM NOTIFICATION TO DEPARTURE FROM STATION:

Superior North EMS monitors how quickly staff responds to emergencies while on duty and, if applicable, while on-call away from the station. Target time for on-site is 90 seconds and for on-call it is 8 minutes.



	2004	2005	2006
On Site	1.11	1.38	1.12
On Call	8.07	7.45	7.03



2006 REPORT FOR MARATHON
SUPERIOR NORTH EMERGENCY MEDICAL SERVICES

STAFFING REPORT:

Approved staffing complement: 4 full-time, 3 part-time

STAFFING PATTERN:

On site hours: 12
Off-site hours: 12

DOWNSTAFFING:

Table with 13 columns (Jan-Dec) and 4 rows (Downstaffing Total, Fully Downstaffed, Total - First Response). All values are 0.

FLEET REPORT:

Total kilometers traveled: 38,274

FACILITY REPORT:

January - June

\* Nothing to report.

July - December

\* Nothing to report.

**TRAINING:**

*January – June*

Type: Wilderness Response  
 Date: March  
 No. attended: 1  
 Length: 16 hrs.  
 Location: Manitouwadge



Type: Backboard Stiffneck Select  
 Date: April  
 No. attended: 1  
 Length: 2 hrs.  
 Location: Marathon

Type: Mandatory Training  
 Date: May  
 No. attended: 4  
 Length: 8 hrs.  
 Location: Manitouwadge/Marathon

Type: Service Instructor Planning  
 Date: June  
 No. attended: 1  
 Length: 16 hrs.  
 Location: Thunder Bay

Type: WHMIS  
 Date: June  
 No. attended: 1  
 Length: 1 hr.  
 Location: Marathon



Type: Vanish Point Syringes  
 Date: June  
 No. attended: 1  
 Length: .5 hr.  
 Location: Marathon

Type: Temp Dot  
 Date: June  
 No. attended: 1  
 Length: .5 hr.  
 Location: Marathon



## 2006 REPORT FOR MARATHON

SUPERIOR NORTH EMERGENCY MEDICAL SERVICES

---

Type: Palliative Care  
Date: June  
No. attended: 1  
Length: .5 hr.  
Location: Marathon

Type: MRx Defibrillator  
Date: June  
No. attended: 1  
Length: 4 hrs.  
Location: Marathon

### ***July – December***

Type: N95 Fit Testing  
Date: November  
No. attended: 6  
Length: .5 hrs.  
Location: Schreiber

Type: Personal Protective Equipment, Asthma, Congestive Heart Failure, Positive Pressure Ventilation, Safety Syringes  
Date: November  
No. attended: 1  
Length: 4 hrs.  
Location: Red Rock

---

### **INJURIES:**

Lost time: 0  
Medical aid: 0

---

### **PUBLIC RELATIONS:**

#### ***January – June***

- \* Home alone course
- \* Standard First Aid/Standard First Aid Recertification
- \* Babysitter course
- \* EMS week mall display in May
- \* Standby for the fun run
- \* Emergency first responder course for the Fire Dept.
- \* Ride for sight games



## 2006 REPORT FOR MARATHON

### SUPERIOR NORTH EMERGENCY MEDICAL SERVICES

---

#### *July – December*

- \* Standby triathlon
  - \* Base tour
  - \* Daycare tour at station
  - \* Babysitting course
- 

#### **CONTRACTED SERVICES:**

Nature of event: 0  
Number of hours: 0

---

#### **INVESTIGATIONS:**

Substantiated: 0  
Unsubstantiated: 0

---

#### **OTHER INFORMATION:**

##### *January – June*

In May, for EMS week, the Marathon Station had a display at Marathon Center Mall. The display included a colouring contest, teddy bear clinic, and blood pressure checks. A manikin with the lungs was also on display so that people could try the bag valve mask. Free coffee, juice, and donuts were provided along with a few draws for prizes.

##### *July – December*

Nothing to report.

[www.SuperiorNorthEMS.com](http://www.SuperiorNorthEMS.com)