

2005 Report for Greenstone Superior North Emergency Medical Services



Request for Service:

This section reports on the primary function of Emergency Medical Services, which is to provide ambulance transportation for sick and injured residents. The first table indicates the number of calls "Year to Date" by priority.

Code 1 is a call that can be deferred without impact to the patient, i.e. going home from the hospital for a visit.

Code 2 is a call that must be done at a certain time due to an appointment, i.e. bringing a patient to the hospital for diagnostics tests at 09:00.

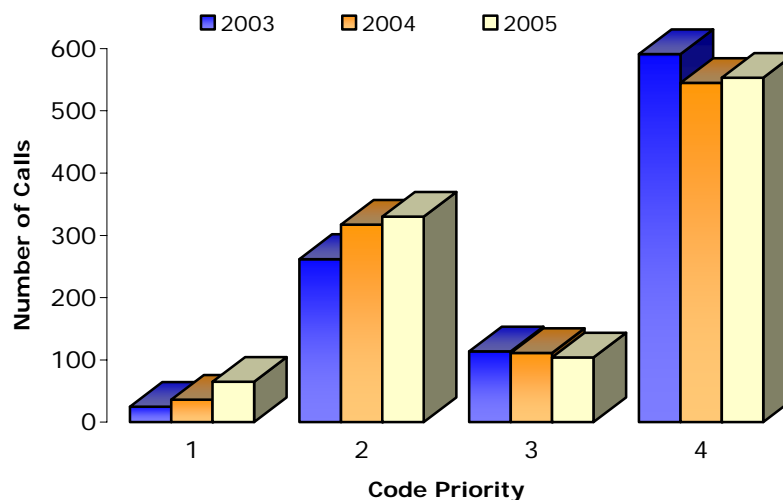
Code 3 is a call that requires a moderate amount of urgency where the patient needs medical attention but life or limb is not at risk, i.e. a simple broken leg.

Code 4 is a call for life and death emergency or unknown situation.

Code 8 is a call where the ambulance is asked to stand by at a specific location, i.e. a fire call.

Code	Jan	Feb	Mar	Apr	May	Jun	July	Aug	Sep	Oct	Nov	Dec	YTD
1	2	3	8	2	2	3	0	12	7	14	7	5	20
2	34	20	24	19	34	32	27	27	14	33	40	26	330
3	10	13	8	7	9	5	7	6	8	10	13	8	104
4	47	47	53	36	50	57	64	50	35	36	39	59	553
8	2	5	5	7	5	6	12	7	7	7	3	10	76
Total	95	88	98	71	100	83	110	102	71	100	102	108	1128

Municipality of Greenstone - Call Volume Information



2005 Report for Greenstone Superior North Emergency Medical Services

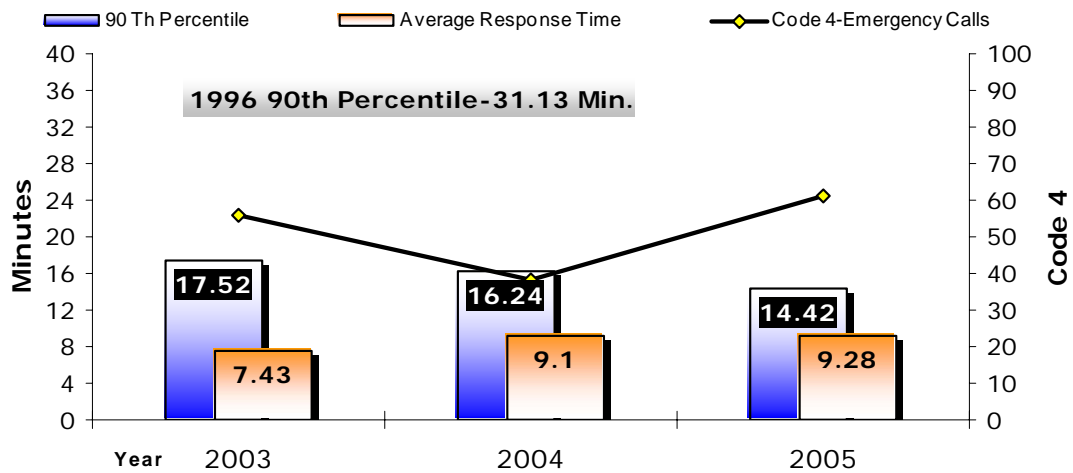


90th Percentile and Average Response Times:

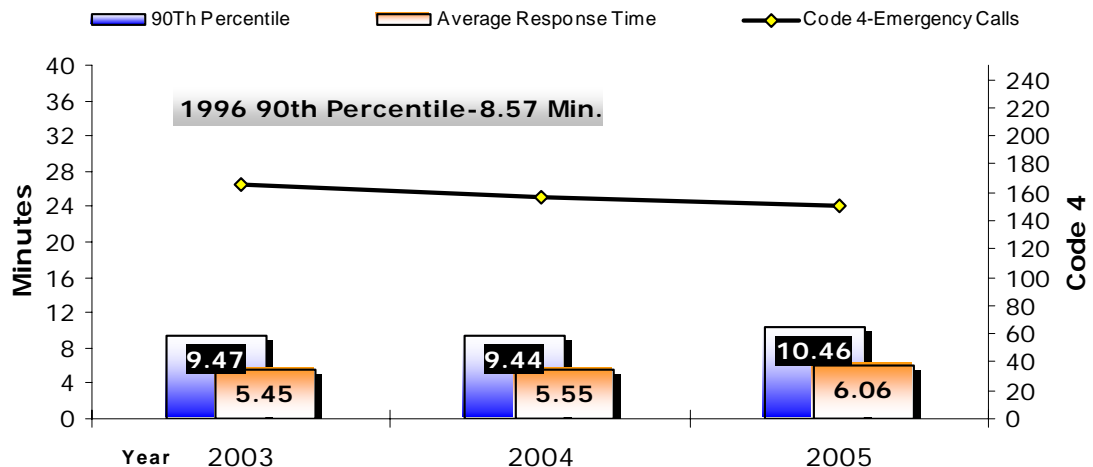
The Ministry of Health and Long Term Care has legislated that response times must be equal to or better than prior to 1997 when the Local Services Realignment initiative was announced. Although MOH-LTC requires only an across the district measurement, we monitor response times in each geographic community. 90th percentile means that 90 percent of the Code 4 calls were responded to in less than the posted time.

1996 District 90th Percentile: 12:41 minutes
Service Level: Basic Life Support

Town of Beardmore



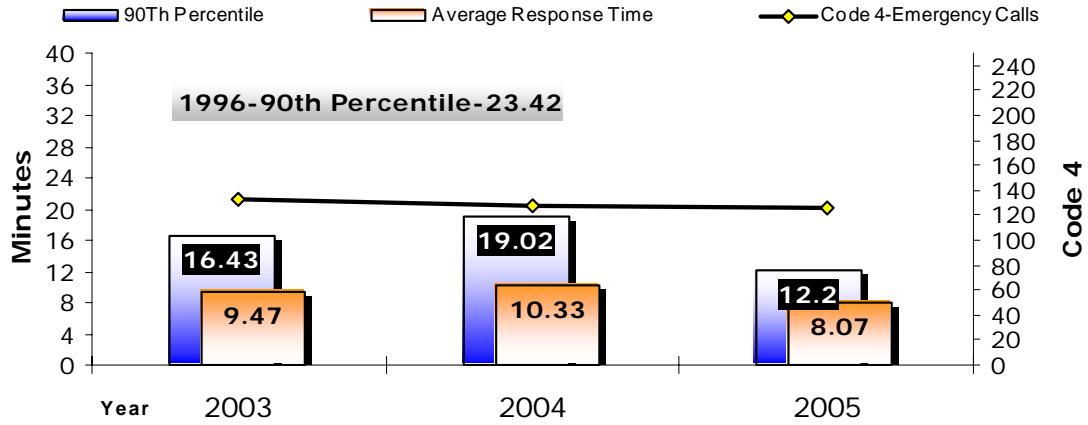
Town of Geraldton



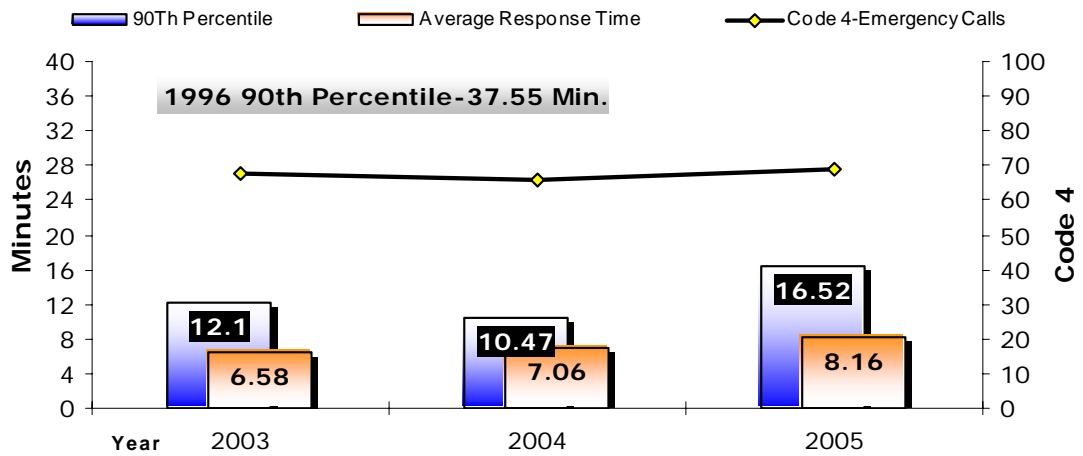
2005 Report for Greenstone Superior North Emergency Medical Services



Town of Longlac



Town of Nakina



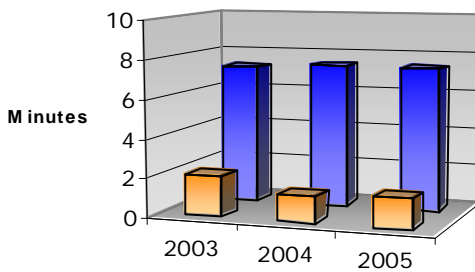
2005 Report for Greenstone Superior North Emergency Medical Services



90th Percentile Reaction Times from Notification to Departure from Station:

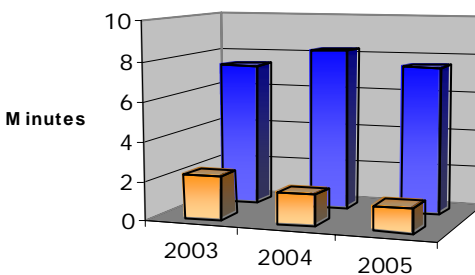
Superior North EMS monitors how quickly staff responds to emergencies while on duty and, if applicable, while on-call away from the station. Target time for on-site is 90 seconds and for on-call it is 8 minutes.

T2-T3 Response Times-Beardmore



	2003	2004	2005
On Site	2.13	1.36	1.53
On Call	7.21	7.42	7.4

T2-T3 Response Times-Geraldton

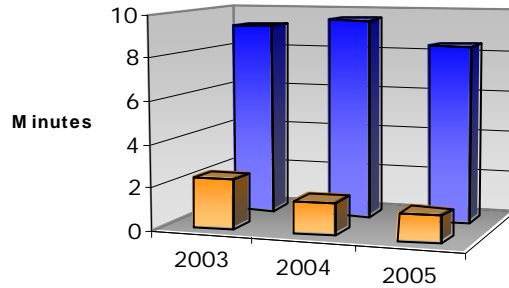


	2003	2004	2005
On Site	2.24	1.57	1.21
On Call	7.38	8.26	7.52

2005 Report for Greenstone Superior North Emergency Medical Services

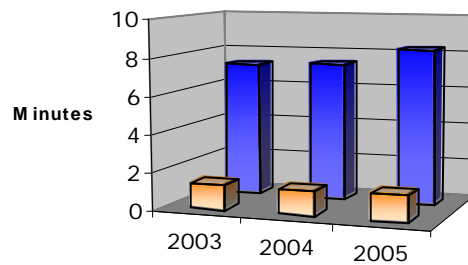


T2-T3 Response Times-Longlac



	2003	2004	2005
On Site	2.37	1.51	1.23
On Call	9.16	9.53	8.39

T2-T3 Response Times-Nakina



	2003	2004	2005
On Site	1.35	1.28	1.4
On Call	7.28	7.4	8.3

Staffing Report:

Beardmore Station

Approved staffing complement: 3 full-time 4 part-time

Actual staffing complement: 2 full-time 3 part-time

Hires: 1

Separations: 2

2005 Report for Greenstone Superior North Emergency Medical Services



Geraldton Station

Approved staffing complement: 4 full-time 3 part-time
 Actual staffing complement: 3 full-time 3 part-time
 Hires: 2 full-time 2 part-time
 Separations: 1 full time 2 part-time

Longlac Station

Approved staffing complement: 3 full-time 4 part-time
 Actual staffing complement: 3 full-time 2 part-time
 Hires: 1 part-time
 Separations: 0

Nakina Station

Approved staffing complement: 3 full-time 4 part-time
 Actual staffing complement: 2 full-time 2 part-time
 New hires: 5
 Separations: 3

Staffing Pattern:

Beardmore, Longlac, & Nakina Stations

On site hours: 10
 Off-site hours: 14

Geraldton Station

On site hours: 12
 Off-site hours: 12

Downstaffing:

Beardmore (hours)	Jan	Feb	Mar	Apr	May	Jun	Jul	Aug	Sep	Oct	Nov	Dec
Downstaffing Total	4.5	0	9	0	2.5	0	19.08	7.5	13.33	17.64	.25	0
Fully Downstaffed	0	0	0	0	0	0	0	0	1.83	0	0	0
Total - First Response	4.5	0	9	0	2.5	0	19.08	7.5	11.5	17.64	.25	0

2005 Report for Greenstone Superior North Emergency Medical Services



Geraldton (hours)	Jan	Feb	Mar	Apr	May	Jun	Jul	Aug	Sep	Oct	Nov	Dec
Downstaffing Total	0	0	0	0	0	0	0	0	0	0	0	0
Fully Downstaffed	0	0	0	0	0	0	0	0	0	0	0	0
Total - First Response	0	0	0	0	0	0	0	0	0	0	0	0

Longlac (hours)	Jan	Feb	Mar	Apr	May	Jun	Jul	Aug	Sep	Oct	Nov	Dec
Downstaffing Total	0	0	0	0	0	0	0	0	0	0	0	24
Fully Downstaffed	0	0	0	0	0	0	0	0	0	0	0	0
Total - First Response	0	0	0	0	0	0	0	0	0	0	0	24

Nakina (hours)	Jan	Feb	Mar	Apr	May	Jun	Jul	Aug	Sep	Oct	Nov	Dec
Downstaffing Total	0	1.98	0	5	22	12.5	19.5	0	4.5	0	0	0
Fully Downstaffed	0	0	0	0	0	0	0	0	0	0	0	0
Total - First Response	0	1.98	0	5	22	12.5	19.5	0	4.5	0	0	0

Fleet Report:

Beardmore Station

Total kilometers travelled: 17,545

Geraldton Station

Total kilometers travelled: 38,857

Vehicle changes: Vehicle 6095 joined the Geraldton fleet in February.

2005 Report for Greenstone Superior North Emergency Medical Services



Longlac Station

Total kilometers travelled: 38,300

Nakina Station

Total kilometers travelled: 22,181

Facility Report:

Beardmore, Longlac, Nakina Stations

Nothing to report.

Geraldton



Grand opening of Geraldton Station May 31, 2005.
Visit by District dignitaries and ribbon cutting with ambulance.

Training:

Beardmore Station

January-June

Type:	Driver Training
Date:	May 3, 4, 5
No. attended:	5
Length:	8 hrs.
Location:	Red Rock

Type:	Peer Support
Date:	June 14, 15
No. attended:	1
Length:	24 hrs.
Location:	Thunder Bay

2005 Report for Greenstone Superior North Emergency Medical Services



All staff reviewed Basic Life Support and Ambulance Call Report standards.

Helicopter Safety – all staff completed self-directed instruction.

July – December

Type: MRx Defibrillator Training
Date: October
No. attended: 1
Length: 3 hrs.
Location: Nipigon

Type: Mandatory Fall Training (harassment, privacy laws, infection control procedures)
Date: November
No. attended: 4
Length: 8 hrs.
Location: Red Rock

Type: N95 Fit Testing
Date: November
No. attended: 5
Length: .5 hrs.
Location: Nipigon

Geraldton Station

January-June

Type: Train the Trainer – Oxygen Testing
Date: January
No. attended: 1
Length: 4 hrs.
Location: Thunder Bay

Type: Driver Training
Date: May 6, 7, 8
No. attended: 5
Length: 8 hrs.
Location: Geraldton

Type: MOH Mandatory Training – Multiple Casualty Incident
Date: May 2
No. attended: 4
Length: 4 hrs.
Location: Geraldton

2005 Report for Greenstone Superior North Emergency Medical Services



Type: MOH Mandatory Training – Stroke Review
Date: May 2
No. attended: 4
Length: 4 hrs.
Location: Geraldton

Type: MRx Defibrillation
Date: February
No. attended: 1
Length: 4 hrs.
Location: Geraldton

Type: Peer Support
Date: June 14, 15
No. attended: 1
Length: 24 hrs.
Location: Thunder Bay

Type: Semi-Automatic External Defibrillation Recertification
Date: April
No. attended: 1
Length: 4 hrs.
Location: Geraldton

Type: Symptom Relief Recertification
Date: April
No. attended: 1
Length: 4 hrs.
Location: Geraldton

Type: Wilderness Response
Date: March
No. attended: 4
Length: 16 hrs.
Location: Manitouwadge

All staff reviewed Basic Life Support and Ambulance Call Report standards.

Helicopter Safety – all staff completed self-directed instruction.

July – December

Type: MRx Defibrillator Training
Date: August
No. attended: 2
Length: 2.5 hrs.
Location: Geraldton

2005 Report for Greenstone Superior North Emergency Medical Services



Type: N95 Qualitative Fit Testing – Train the Trainer
Date: October
No. attended: 1
Length: 2.5 hrs.
Location: Thunder Bay

Type: Mandatory Fall Training (harassment, privacy laws, infection control procedures)
Date: November
No. attended: 5
Length: 8 hrs.
Location: Geraldton

No. attended: 1
Location: Red Rock

Longlac Station

January-June

Type: Driver Training
Date: May 6, 7, 8
No. attended: 4
Length: 8 hrs.
Location: Geraldton

Type: Peer Support
Date: June 14, 15
No. attended: 1
Length: 24 hrs.
Location: Thunder Bay

Type: Semi-Automatic External Defibrillation Recertification
Date: April
No. attended: 1
Length: 4 hrs.
Location: Longlac

Type: Symptom Relief Recertification
Date: January
No. attended: 1
Length: 4 hrs.
Location: Longlac

All staff reviewed Basic Life Support and Ambulance Call Report standards.

Helicopter Safety – all staff completed self-directed instruction.

2005 Report for Greenstone Superior North Emergency Medical Services



Nakina Station

January-June

Type: Driver Training
Date: May 6, 7, 8
No. attended: 4
Length: 8 hrs.
Location: Geraldton

Type: MRx Defibrillation
Date: February
No. attended: 1
Length: 4 hrs.
Location: Geraldton

Type: Peer Support
Date: June 14, 15
No. attended: 1
Length: 24 hrs.
Location: Thunder Bay

Type: Semi-Automatic External Defibrillation Recertification
Date: April
No. attended: 2
Length: 4 hrs.
Location: Nakina

Type: Symptom Relief Recertification
Date: April
No. attended: 2
Length: 4 hrs.
Location: Nakina

Type: Wilderness Response
Date: March
No. attended: 1
Length: 16 hrs.
Location: Manitouwadge

All staff reviewed Basic Life Support and Ambulance Call Report standards.

Helicopter Safety – all staff completed self-directed instruction.



July – December

Type: Mandatory Fall Training (harassment, privacy laws, infection control procedures)
 Date: November
 No. attended: 2
 Length: 8 hrs.
 Location: Geraldton
 No. attended: 1
 Location: Red Rock

Type: MRx Defibrillator Training
 Date: August
 No. attended: 1
 Length: 2.5 hrs.
 Location: Geraldton

Injuries:

Beardmore Station

Lost time: 1
 Medical aid: 2

Geraldton Station

Lost time: 0
 Medical aid: 0

Longlac Station

Lost time: 0
 Medical aid: 2

Nakina Station

Lost time: 0
 Medical aid: 1

Public Relations:

Beardmore Station

January – June

- * JK-Grade 1 class presentation
- * visited senior citizens home
- * colouring contest for children

July – December

- * health fair – great public attendance

Geraldton Station

January – June

- * career day
- * station tours
- * Easter egg hunt
- * karate tournament
- * safety talk with day camp staff
- * drinking & driving presentation with OPP
- * child seat inspection clinic/OPP & District Health Unit

July – December

- * nothing to report.



2005 Report for Greenstone Superior North Emergency Medical Services



Longlac Station

January – June

An 8 hr. Red Cross course was held in July, October, November, and December. A total of 38 people were trained in these four courses.

July – December

Red Cross courses held for the public in July, October, November, and December. In total 38 people took these courses.

Nakina Station

January – June

Nothing to report.

July – December

Nothing to report.

Contracted Services:

Beardmore, Geraldton, Longlac, & Nakina Stations

Nature of event: 0
Number of hours: 0

Investigations:

Beardmore, & Nakina Stations

Substantiated: 0
Unsubstantiated: 0

Geraldton

Unsubstantiated: 1
Inconclusive: 1

Longlac

Partially Substantiated: 1
Substantiated: 1



Ambulance, Paramedic Response Unit, Emergency Support Unit
at the Geraldton Clinic

2005 Report for Greenstone Superior North Emergency Medical Services



Other Information:

Beardmore

One part-time staff member on WSIB from August to December.
One part-time staff member started paternity leave in September.

Longlac, & Nakina Stations

Nothing to report for January to June.

Geraldton Station

In March a babysitting course was conducted for eight members of the community.

The grand opening of the Geraldton Station was held on May 31th. Over 25 delegates from the Ministry of Health and Long Term Care, Ontario Provincial Police, Ministry of Natural Resources, City of Thunder Bay, Municipality of Greenstone, Local Fire Departments, Geraldton District Hospital, and Superior North EMS attended.

Mandatory training conducted in September.

Recertification with Base Hospital conducted in October.

Nakina

Mandatory training conducted in September.

Recertification with Base Hospital conducted in October.



Nakina

Longlac



Beardmore